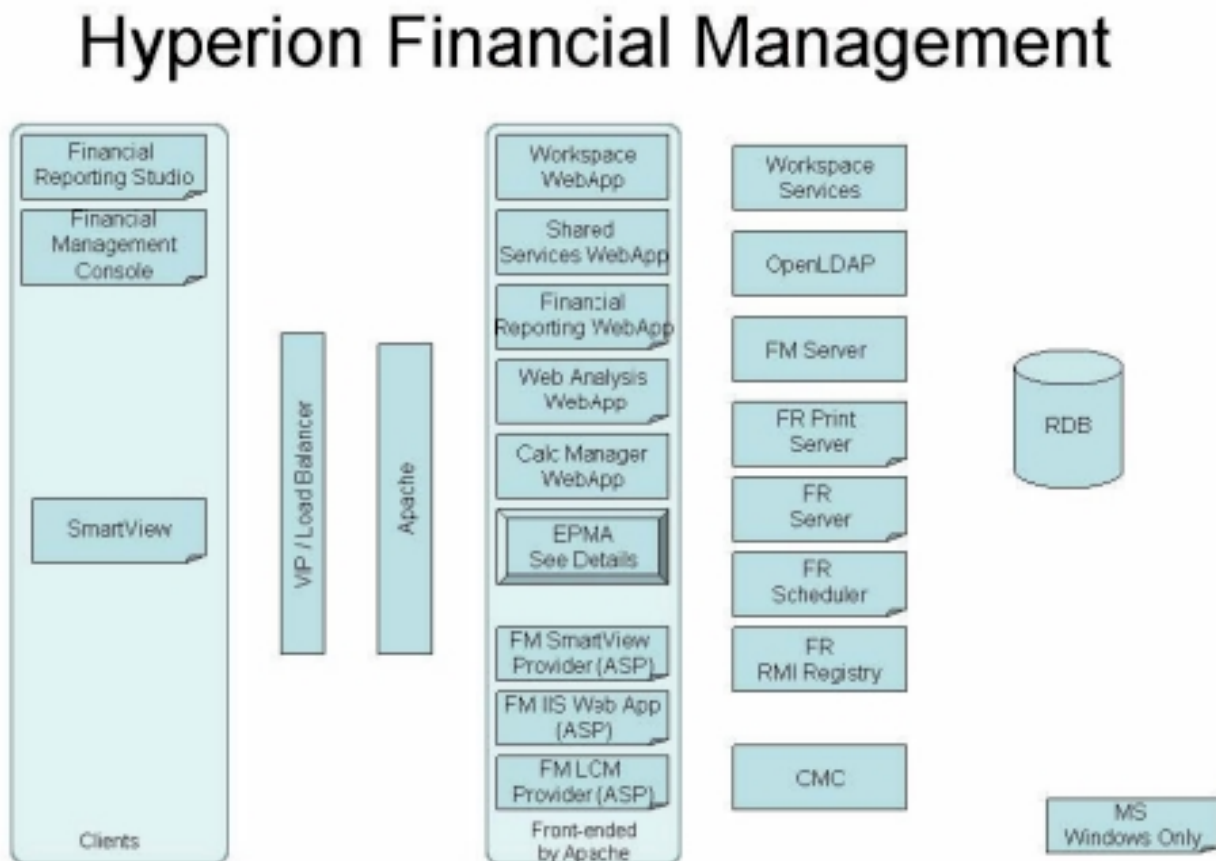


The following diagram shows a typical architecture for a Financial Management deployment:



**Note:** The EPMA box in the diagram above represents all components of Performance Management Architect (EPMA). Please refer to the Performance Management Architect diagram for detailed information on EPMA components.

Clients not in front of a VIP/Load Balancer communicate directly with their respective servers.

Shared Services Web application is front-ended by Apache but will also be accessed directly in some use cases.